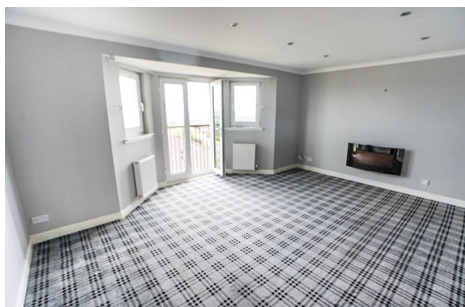


Carrickvale Court

Carrickstone , Cumbernauld

- TOP FLOOR EXECUTIVE
- LOUNGE WITH PANAROMIC VIEWS
- TWO DOUBLE BEDROOMS
- FAMILY BATHROOM AND EN-SUITE
- DG, GCH, ALLOCATED PARKING, SECURED ENTRY
- UNFURNISHED - AVAILABLE NOW



PROPERTY

K Property
8 Ettrick Square
Town Centre
Cumbernauld
G67 1ND

Tel: 01236 455110
Fax: 01236 898487
katrina@k-property.co.uk
www.k-property.com

£795

Monthly - Calendar



Carrickvale Court , Carrickstone , Cumbernauld , G68 0LA

Seldom available larger style Top Floor Executive Flat brought to the market in an excellent order throughout and Panaromic views. Located in one of Cumbernauld's prestigious addresses this flat must be seen to be fully appreciated.

In more detail the accommodation comprises:- welcoming entrance hallway, bright lounge with parisian balcony, dining fitted kitchen with integrated appliances, two double bedrooms, master with en suite and three piece bathroom suite. Beneficial features include, DG, GCH, ample storage, allocated parking and secured entry system. A stylish deceptively spacious Home which must not be missed



Other Information..

EPC C

Landlord Registration Number: TBC

If you would like to arrange a viewing or make an offer, please contact Donna Cramb at our Cumbernauld branch on 01236 455110 or via email at donna@k-property.co.uk.